



Statesville High School Presentation

Tuesday, December 14, 2021

By: Hannah Tuthill

What is an Apprenticeship program?

- Apprenticeship: is an industry-driven, high quality career pathway where employers can develop and prepare their future workforce, and individuals can obtain paid work experience, classroom instruction, and a portable, national-recognized credential.
 - **Earn while you learn**



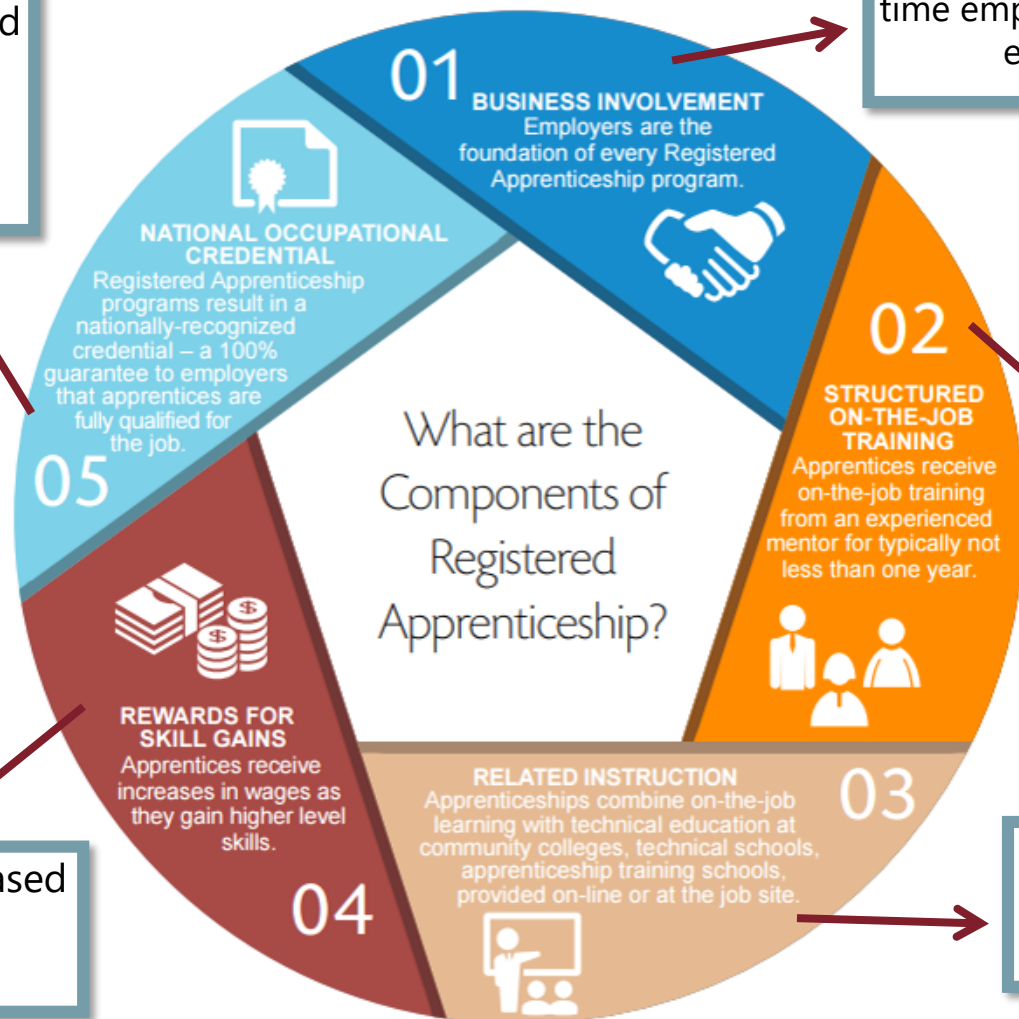
Overview of Apprenticeship Iredell Program

- Started in Fall 2020
- Current number of apprentices: 3
- Current number employer partners: 2
- Program of Study: Mechatronics



Apprentice earns college credential, industry-recognized credentials embedded into programs, and national journey worker credential

Apprentice hired as full time employee with local employer



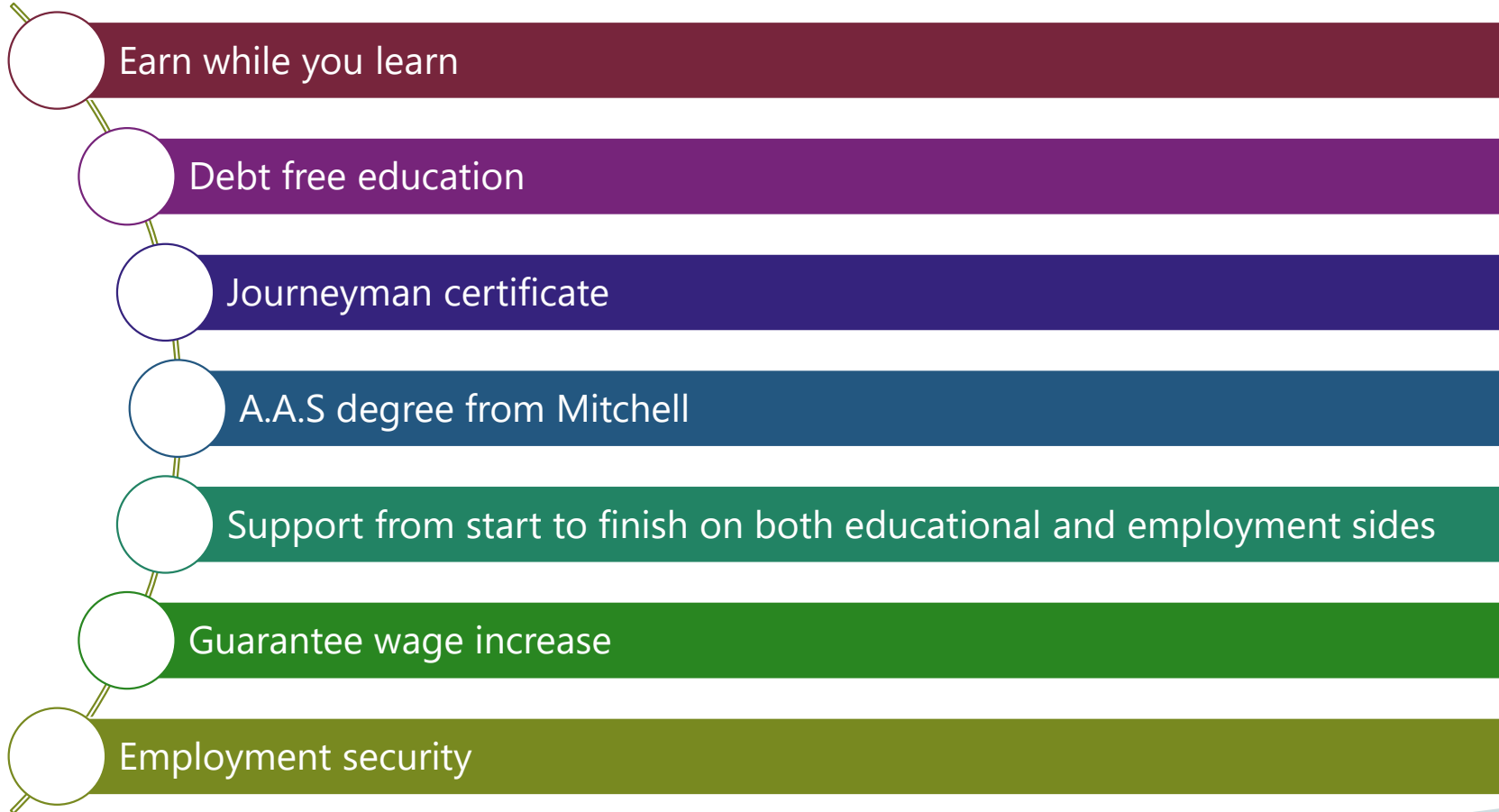
Experienced employee mentors and trains apprentice

Apprentice enrolls in degree program at Mitchell

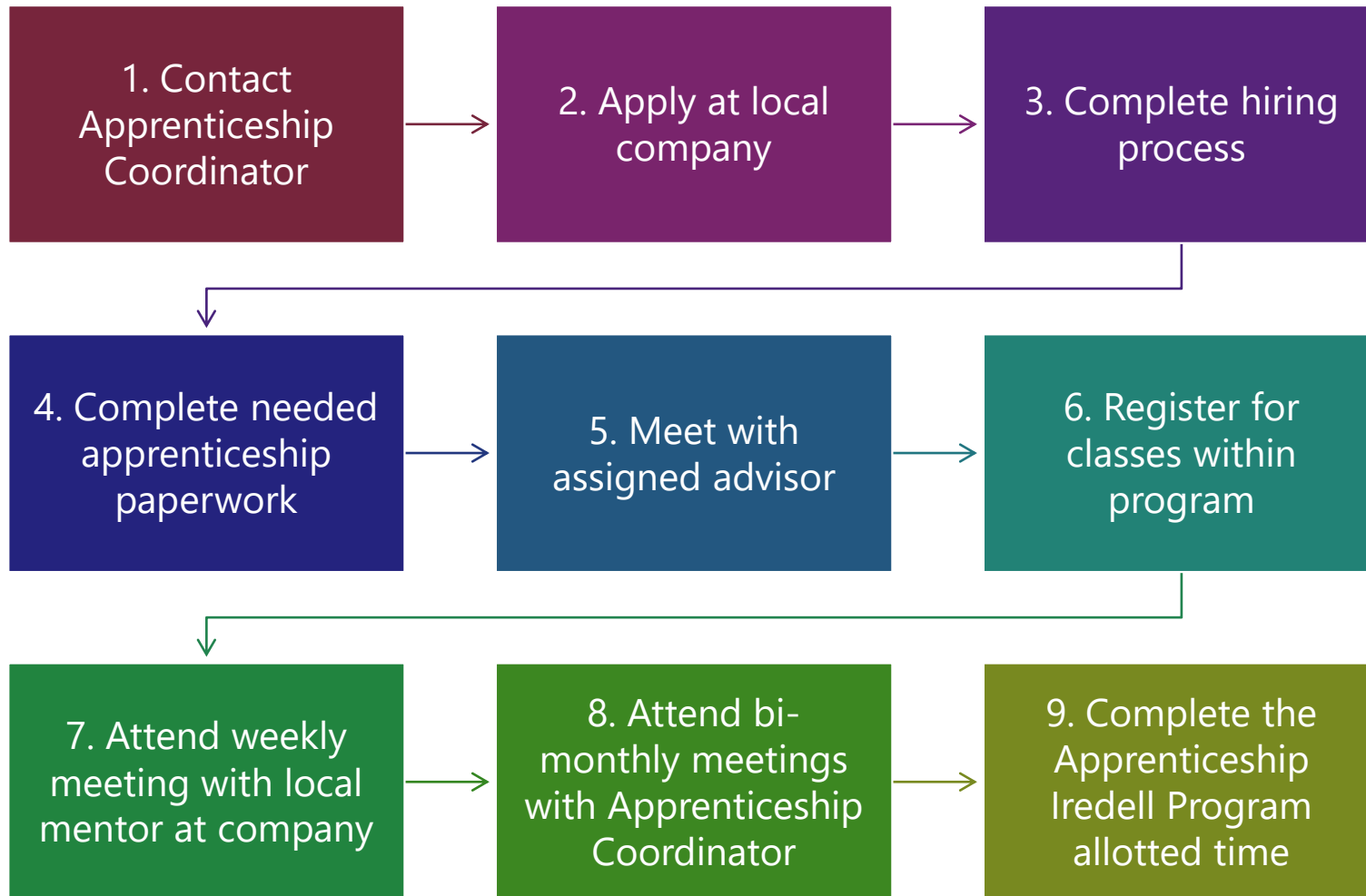
Wage increases based on time or competencies



Benefits for Students



Process for Students



Contact Information & Questions



- htuthill@mitchellcc.edu
- (704) 878-4263

